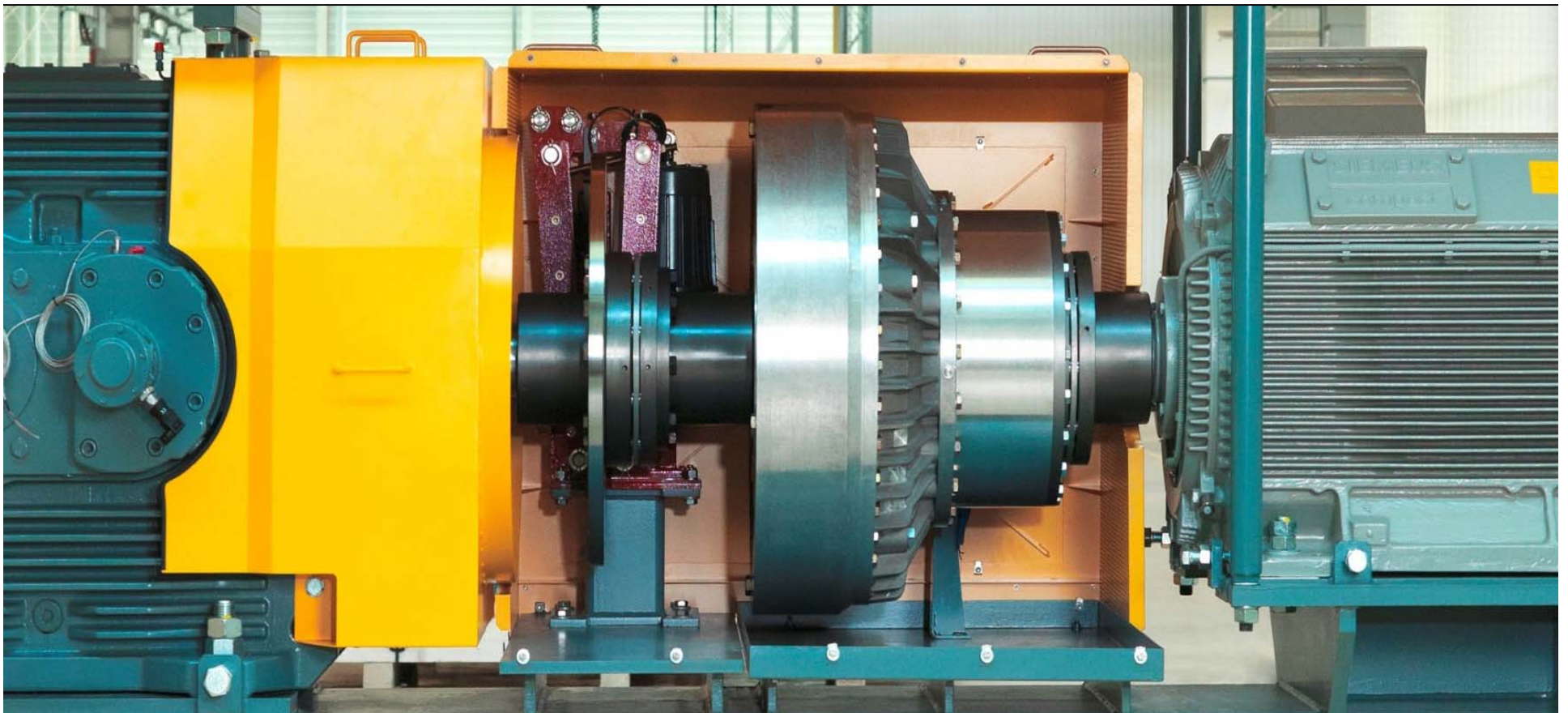




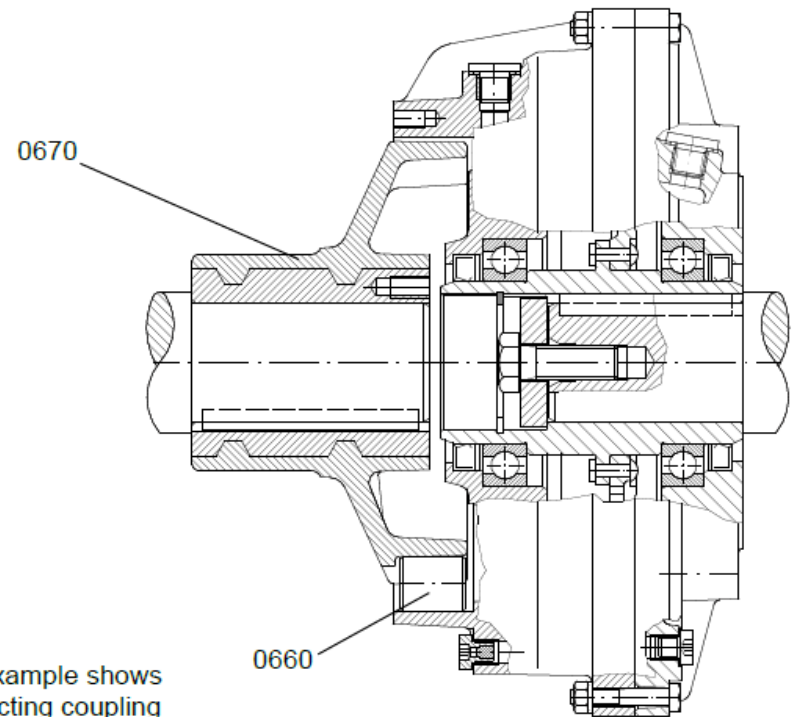
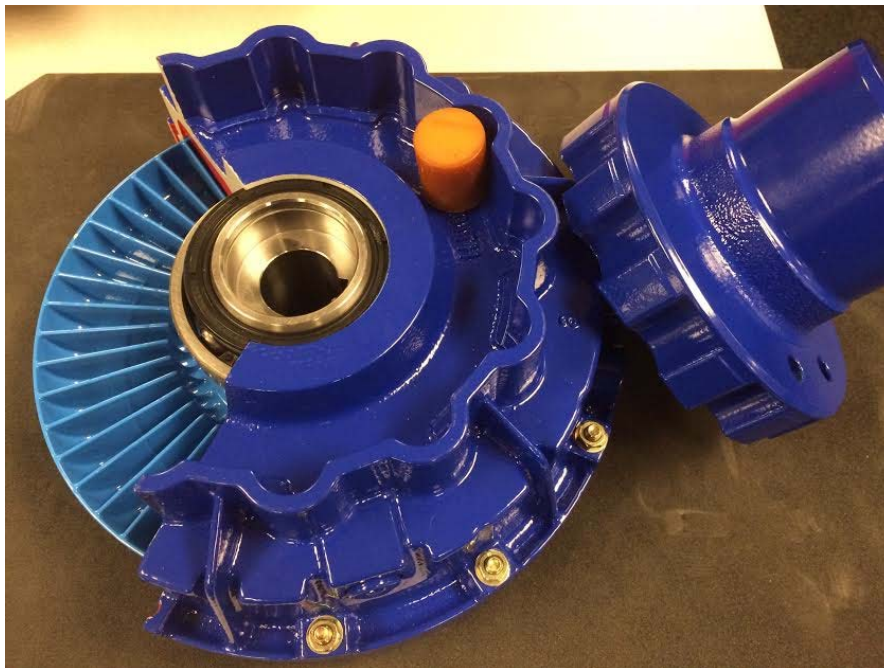
VOITH

Voith Connecting Couplings



Connection Couplings: ERK

Roller element style, fluid coupling itself is casted to accept the elements

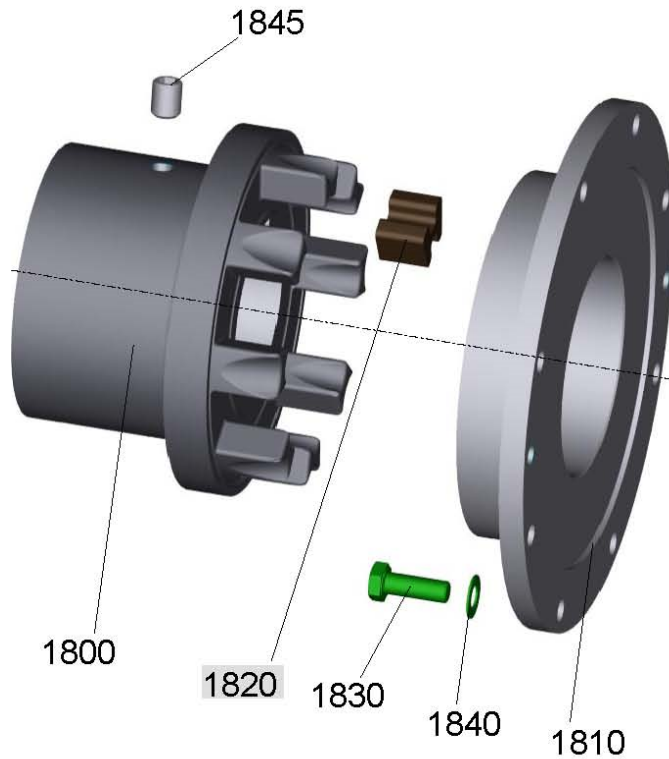


The example shows connecting coupling of type ERK

ERK Available In: 154 - 274

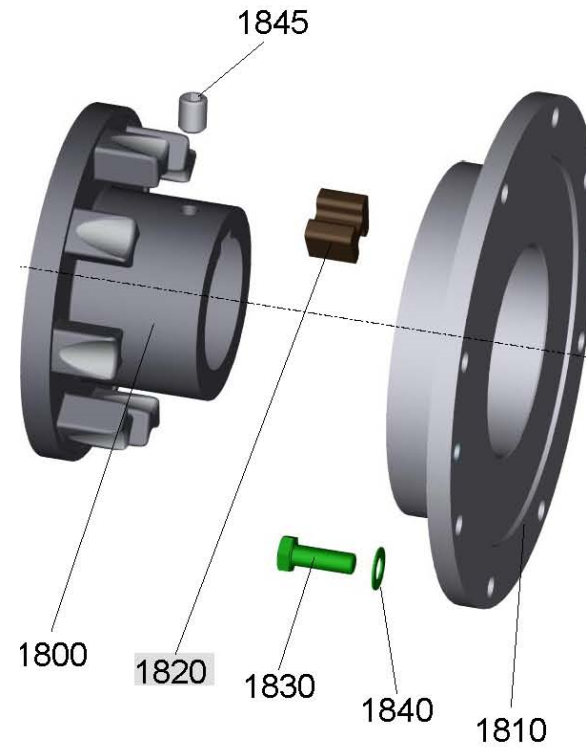
Connection Couplings: EEK

Outer Shaft Hub,
type EEK-E



EEK-E Available In: 274-487

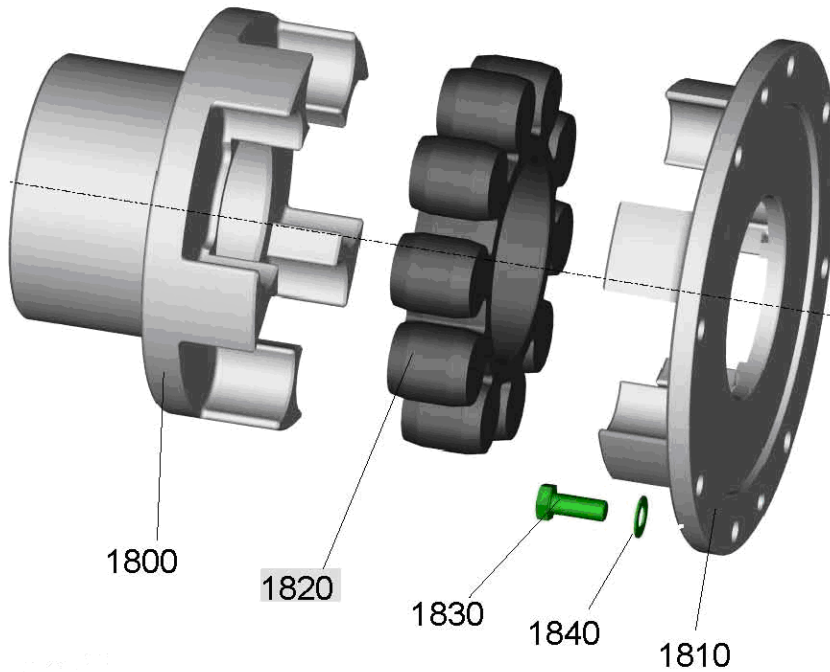
Inner Shaft Hub,
type EEK-M



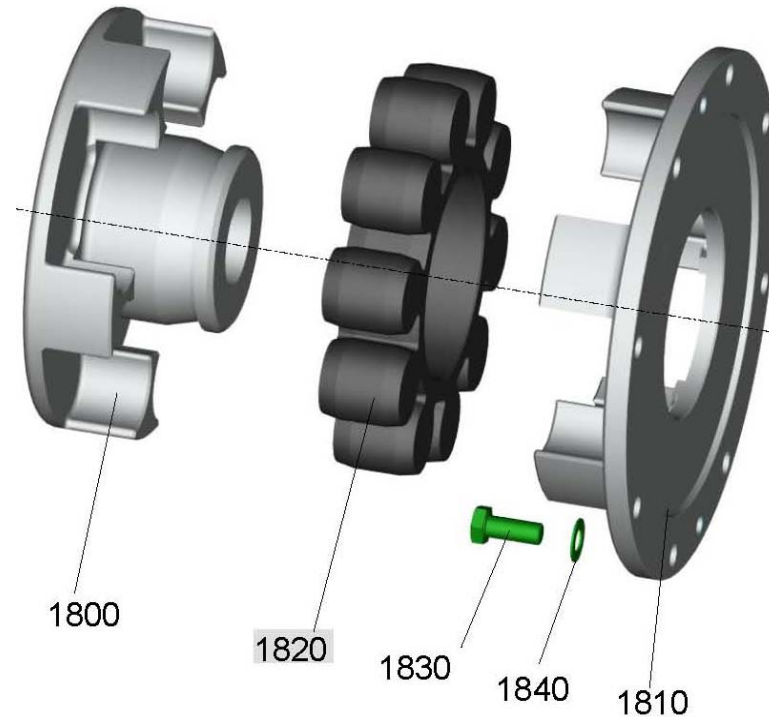
EEK-M Available In: 274-487

Connection Couplings: ENK

Outer Shaft Hub,
type ENK-SX



Inner Shaft Hub,
type ENK-SV

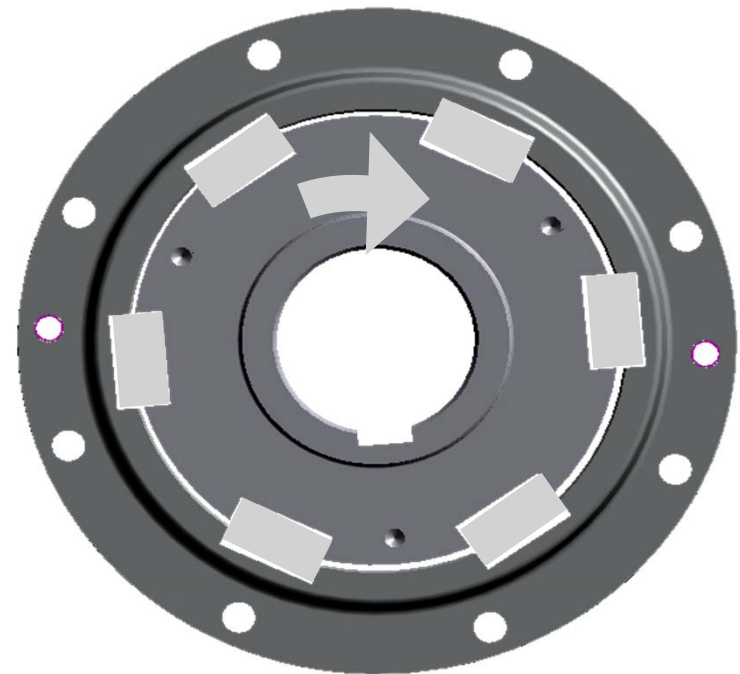
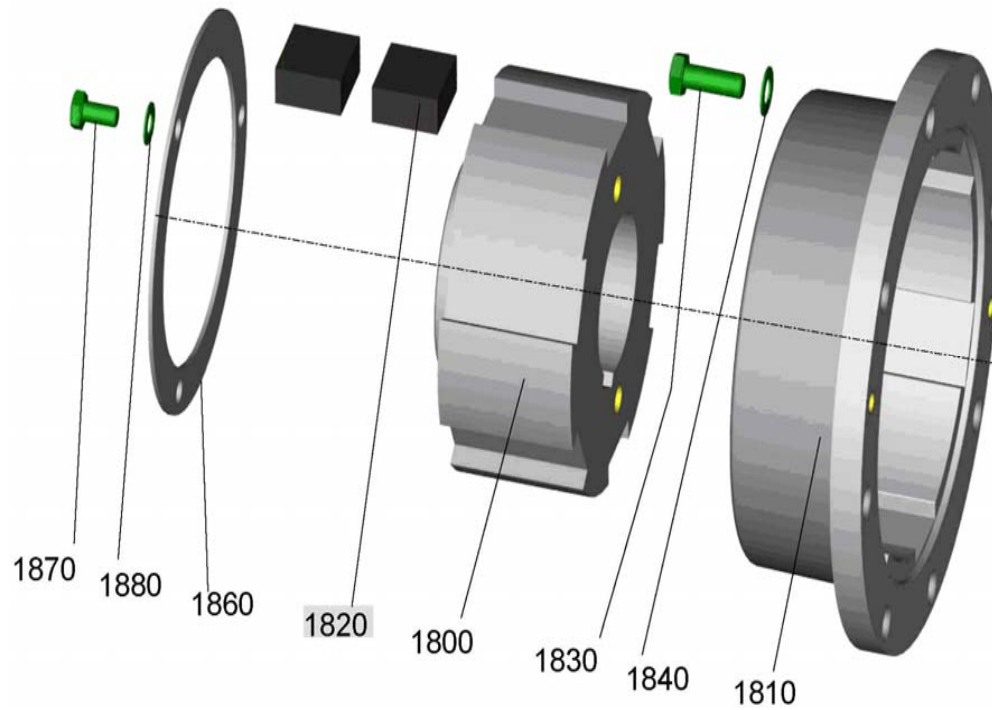


ENK-SX Available In: 274-750

ENK-SV Available In: 274-750

Connection Couplings: EPK

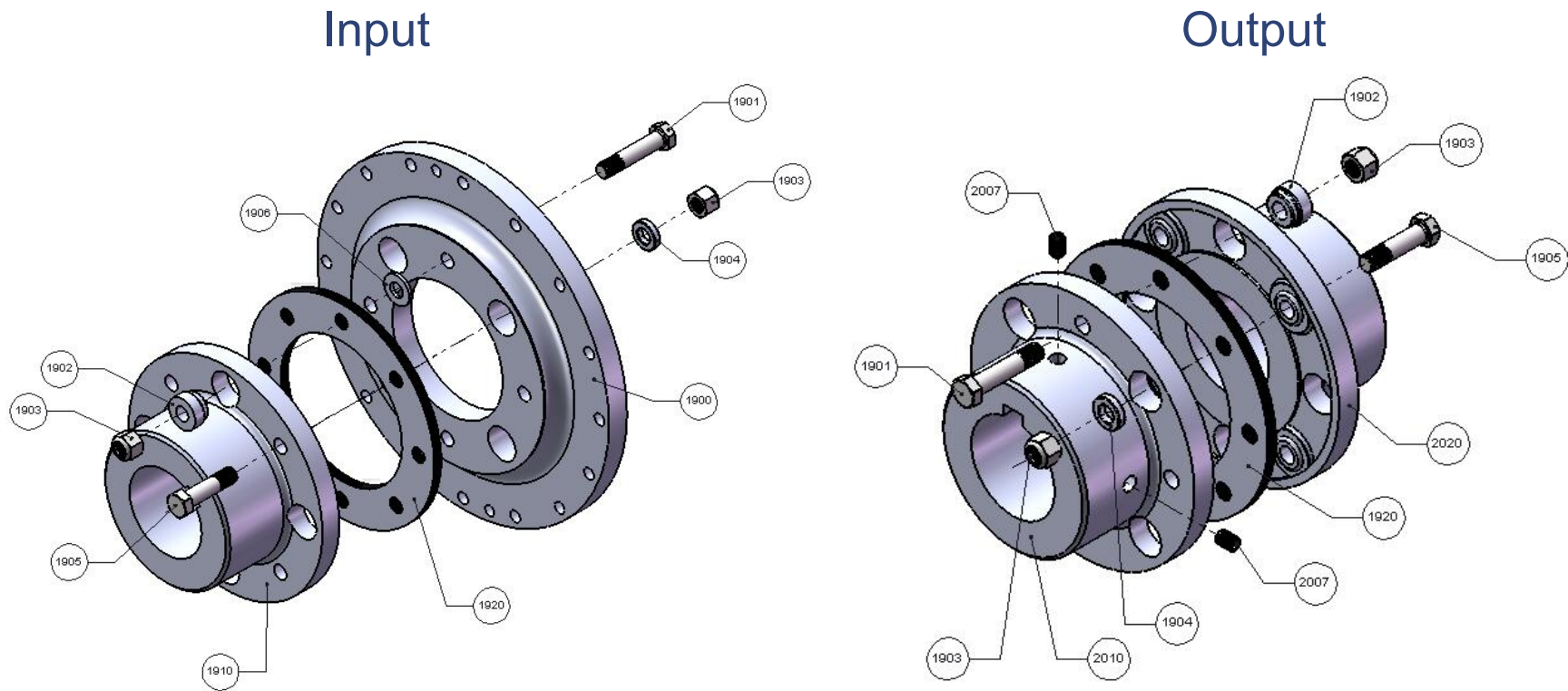
Flexible Cam Coupling, type EPK



EPK Available In: 487-1150

Connection Couplings: XP

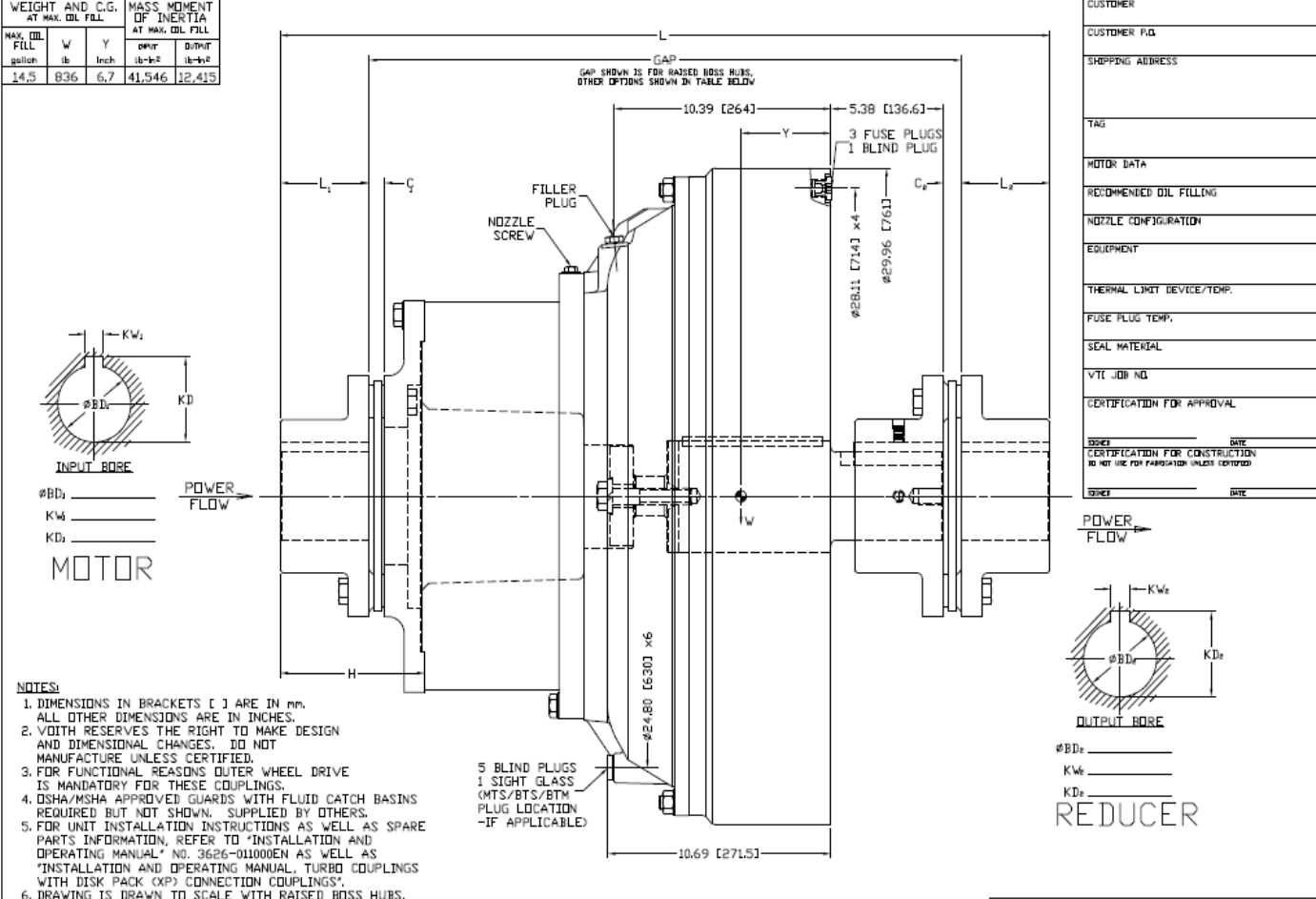
Flexible Disk Pack Coupling, type XP



XP Available In: 422-1000

650TVVS-XP

WEIGHT AND C.G. AT MAX. OIL FILL		MASS MOMENT OF INERTIA AT MAX. OIL FILL	
MAX. OIL FILL gallon	W lb	Y inch	D _{OUT} lb-in ²
14.5	836	6.7	41,546
			12,415



INPUT BORE

MOTOR

OUTPUT BORE

REDUCER

NOTES:

1. DIMENSIONS IN BRACKETS [] ARE IN mm.
2. ALL OTHER DIMENSIONS ARE IN INCHES.
3. VOITH RESERVES THE RIGHT TO MAKE DESIGN AND DIMENSIONAL CHANGES. DO NOT MANUFACTURE UNLESS CERTIFIED.
4. FOR FUNCTIONAL REASONS OUTER WHEEL DRIVE IS MANDATORY FOR THESE COUPLINGS.
5. OSHA/MSHA APPROVED GUARDS WITH FLUID CATCH BASINS REQUIRED BUT NOT SHOWN. SUPPLIED BY OTHERS.
6. FOR UNIT INSTALLATION INSTRUCTIONS AS WELL AS SPARE PARTS INFORMATION, REFER TO "INSTALLATION AND OPERATING MANUAL" NO. 3626-011000EN AS WELL AS "INSTALLATION AND OPERATING MANUAL, TURBO COUPLINGS WITH DISK PACK (XP) CONNECTION COUPLINGS".
7. DRAWING IS DRAWN TO SCALE WITH RAISED BOSS HUBS.

STUB SHAFT HUB	INPUT HUB	OUTPUT HUB	L	GAP	H	L ₁	C ₁	L _e	C _e	#BD
RAISED BOSS	RAISED BOSS	RAISED BOSS	36.89	28.39	6.94	4.25	.75	4.25	.88	4.25
	FLAT FACE	FLAT FACE	36.64	28.14	6.82	4.25	.63	4.25	.75	4.75
	RAISED BOSS	FLAT FACE	36.77	28.27	6.94	4.25	.75	4.25	.75	-
	FLAT FACE	RAISED BOSS	36.77	28.27	6.82	4.25	.63	4.25	.88	-
FLAT FACE	RAISED BOSS	RAISED BOSS	36.77	28.27	6.94	4.25	.75	4.25	.75	4.25
	FLAT FACE	FLAT FACE	36.52	28.02	6.82	4.25	.63	4.25	.63	4.75
	RAISED BOSS	FLAT FACE	36.64	28.14	6.94	4.25	.75	4.25	.63	-
	FLAT FACE	RAISED BOSS	36.64	28.14	6.82	4.25	.63	4.25	.75	-

**5 BLIND PLUGS
1 SIGHT GLASS
(M/T/S/B/T/M
PLUG LOCATION
-IF APPLICABLE)**

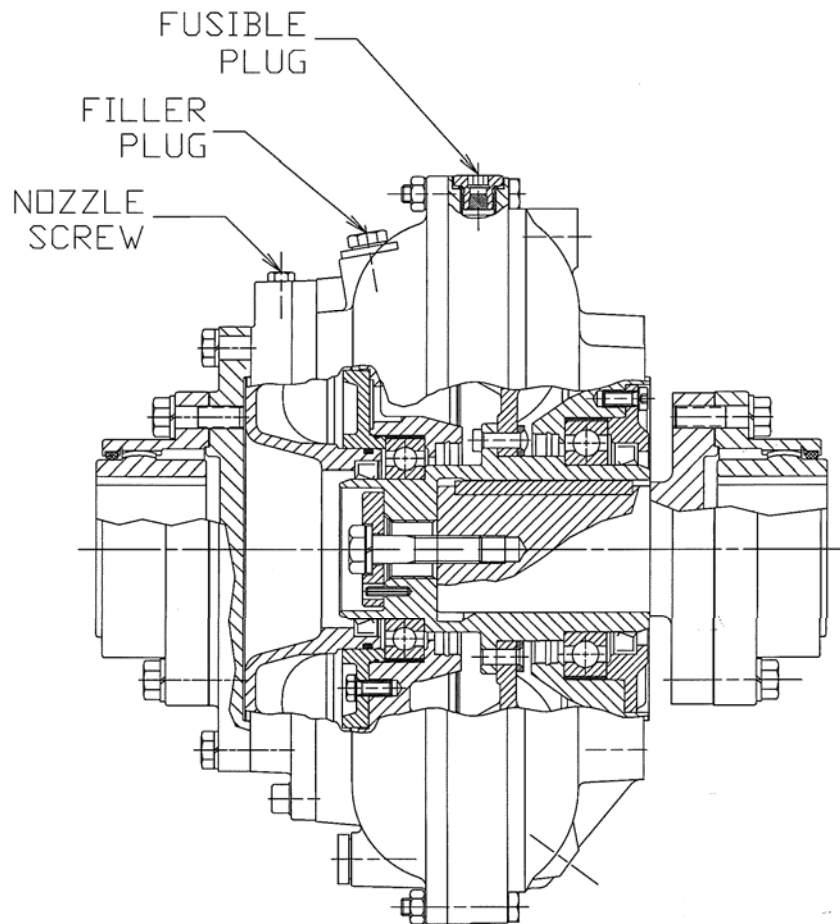
FORM 650 TVVS-XP

DATE: 100412 PART NUMBER: - REV: 0

WEIGHT/SEE TABLE | PAGE: 1/1 | SCALE: 1/1 | REV

All new XP units, since 2013

Connection Couplings: XG Gear Coupling



Gear type connection- allows for radial removal

Voith provides for coupling sizes 487 & smaller only.

Requires periodic greasing-maintenance.

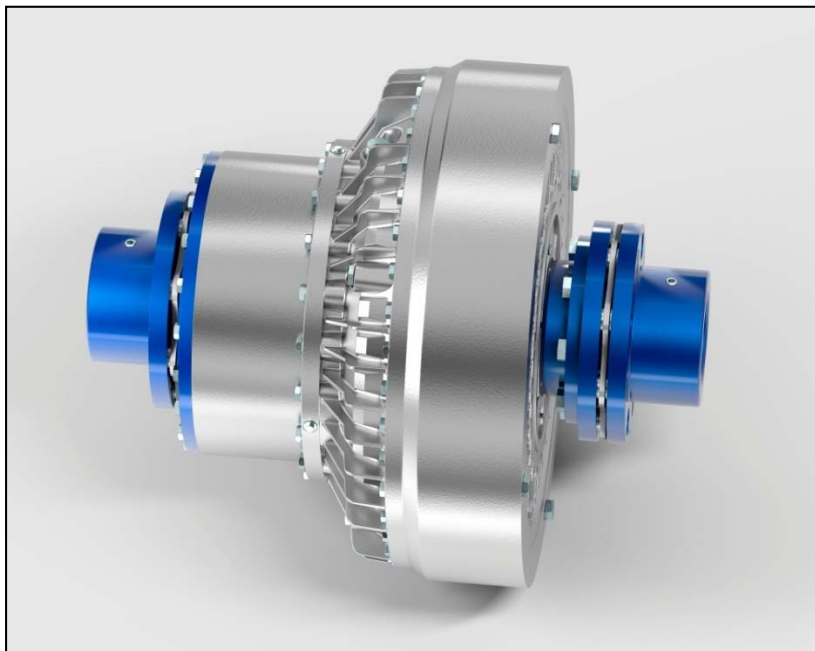
Can be a source of vibration as wear occurs

Only use Voith supplied Gear Couplings for proper rabet fit.

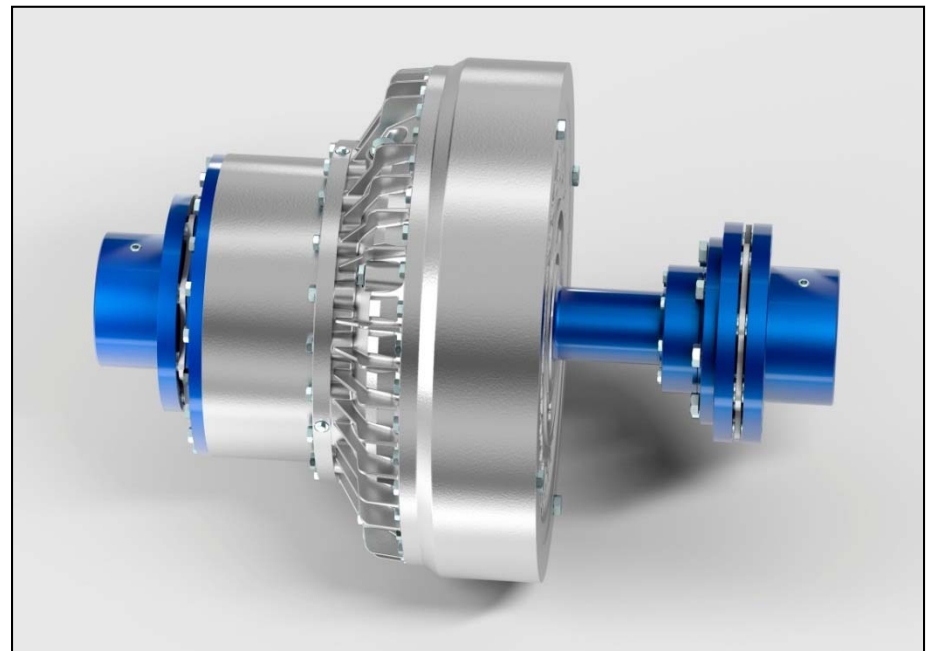
Connection Couplings: GPK, GPK-XP

Flexible Disk Pack Coupling (parts different than –XP)

GPK design



GPK-XP design clamping hub



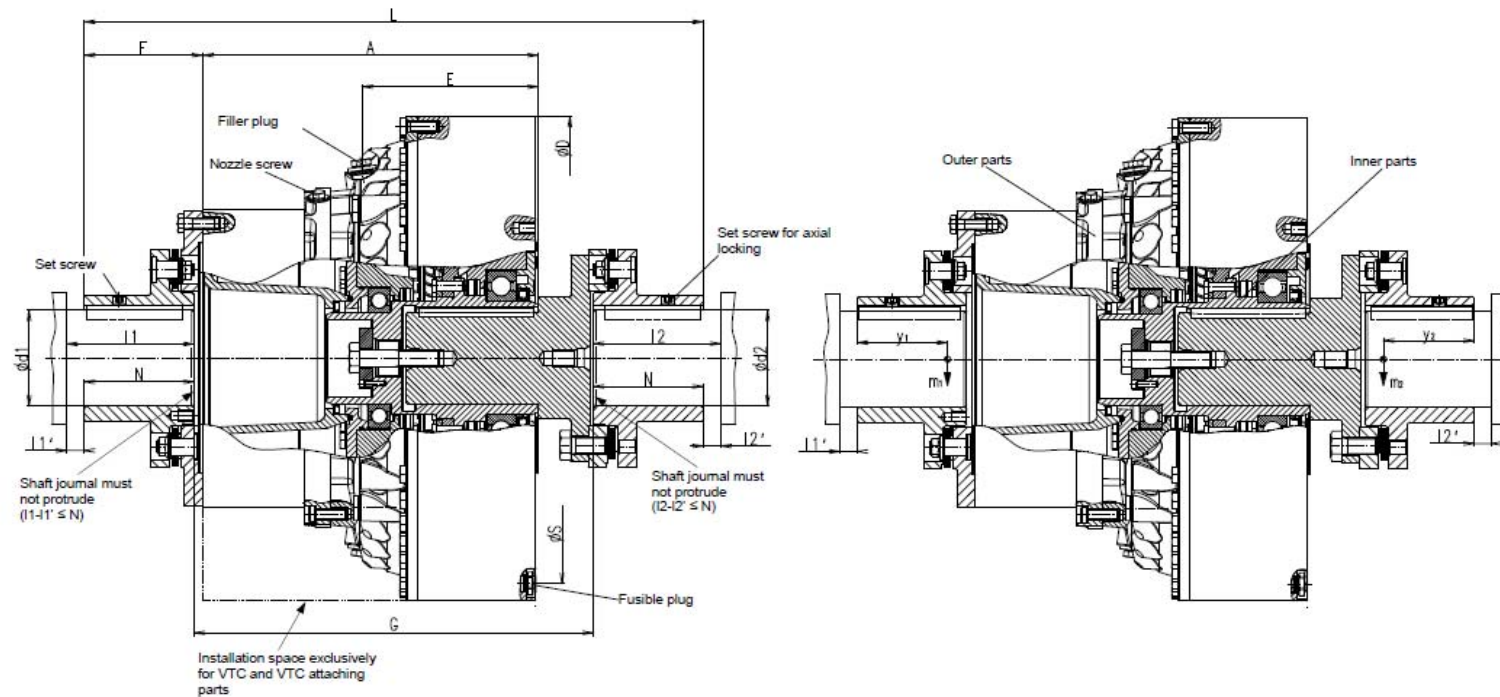
GPK / GPK-XP Available In: 422-1000

650TVVS-GPK

Work Sheet ait259.2

Type TVVS
(TVVYS, TVVFS)
422 - 1150

Dimension sheet for Voith turbo coupling with GPK



Date: 2011-03-01
Issued: aitt - cra_DHbr
Checked: aitt - HHd

Replacing: ca258.1 (Issued: 2000-03-14)
Originating from: -
Copies to: Sales documents

9173644-006977 EN1
Rev. 02 / 000000
Page 1 / 4 /

650TVVS-GPK-XP

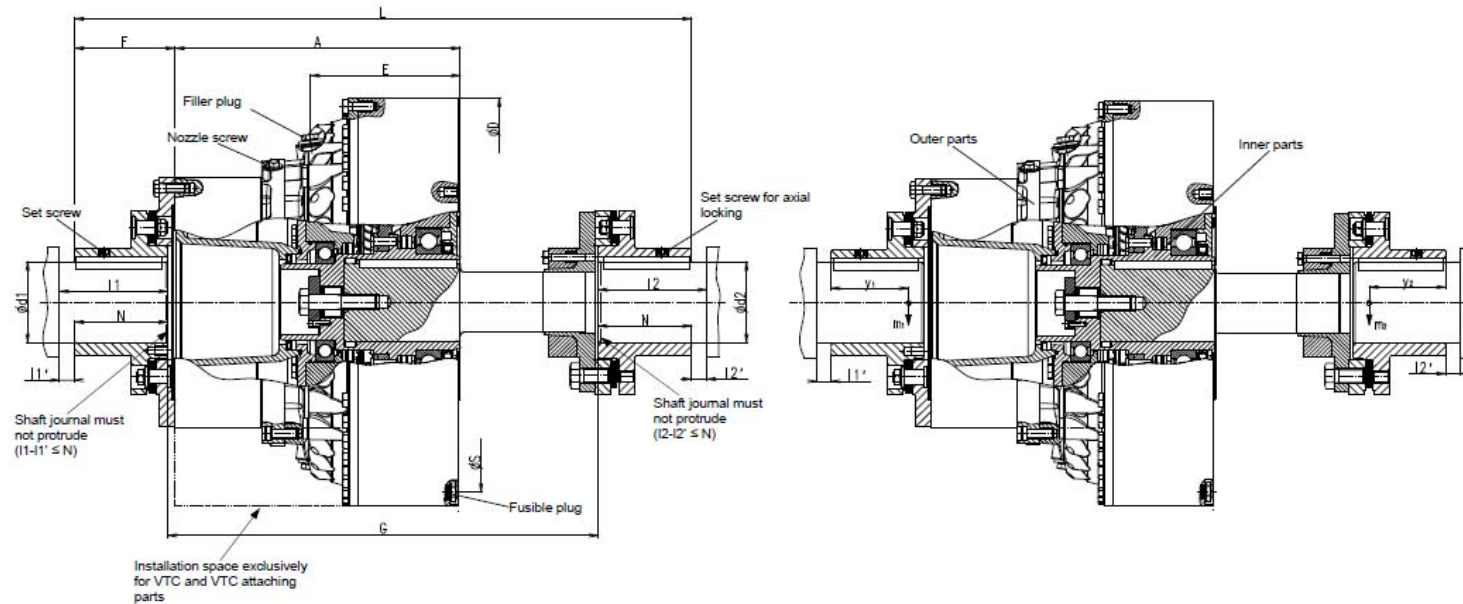


Voith Turbo
Market sector Industry

Work Sheet ait259.2

Type TVVS
(TVVYS, TVVFS)
422 - 1150

Dimension sheet for Voith turbo coupling with GPK-XP



Date: 2011-03-01
Issued: ait - cra_DHbr
Checked: ait - HHd

Replacing: ca259.1 (issued: 2000-03-14)
Originating from: -
Copies to: Sales documents

9173644-006977 EN1
Rev. 02 / 000000
Page 3 / 4

Vertraulich, alle Rechte vorbehalten ISO 16016

Confidential, all rights reserved ISO 16016

Confidencial, reservados todos os direitos ISO 16016



4000 Airline Dr, Suite D
Houston, TX, 77022
Phone: +1-346-398-4400
Email: sales@delreypartners.com